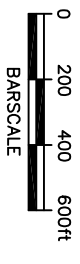
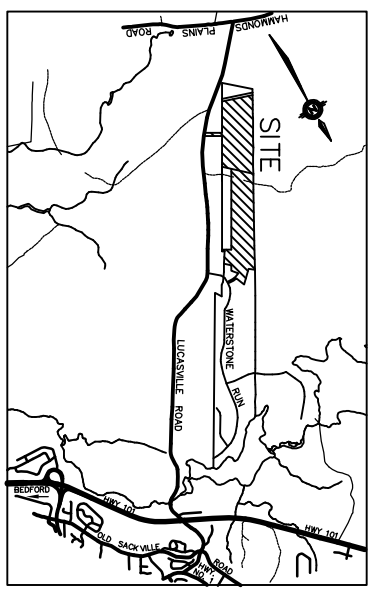
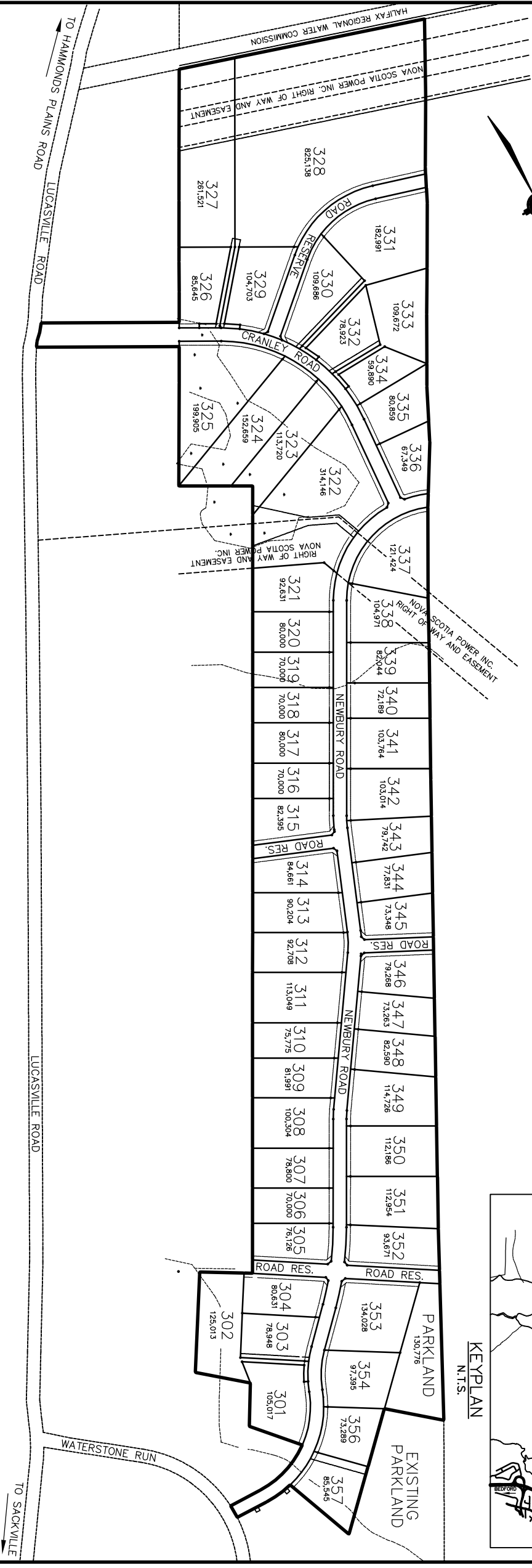




# WATERSTONE VILLAGE - PHASE 3

## HAMMONDS PLAINS, NOVA SCOTIA

PLEASE NOTE, KIMBERLY LLOYD DEVELOPMENTS OR ITS AFFILIATED COMPANIES DOES NOT WARRANT THE INFORMATION SHOWN ON THIS PLAN, AND IS TO BE USED SOLELY FOR THE PURPOSES OF MARKETING. TO INSURE ACCURACY, ALL LOT DIMENSIONS, AREAS AND LOT CONFIGURATIONS MUST BE VERIFIED ON THE APPROVED SURVEY PLANS. PLEASE CONTACT THE SALES & MARKETING DEPARTMENT AT 423-4000.



DATE : DECEMBER 5, 2005  
 DRAWING NO.: 540-M-01.1  
 NOTE:  
 ALL DISTANCES ARE IN FEET.  
 ALL AREAS ARE IN SQUARE FEET.