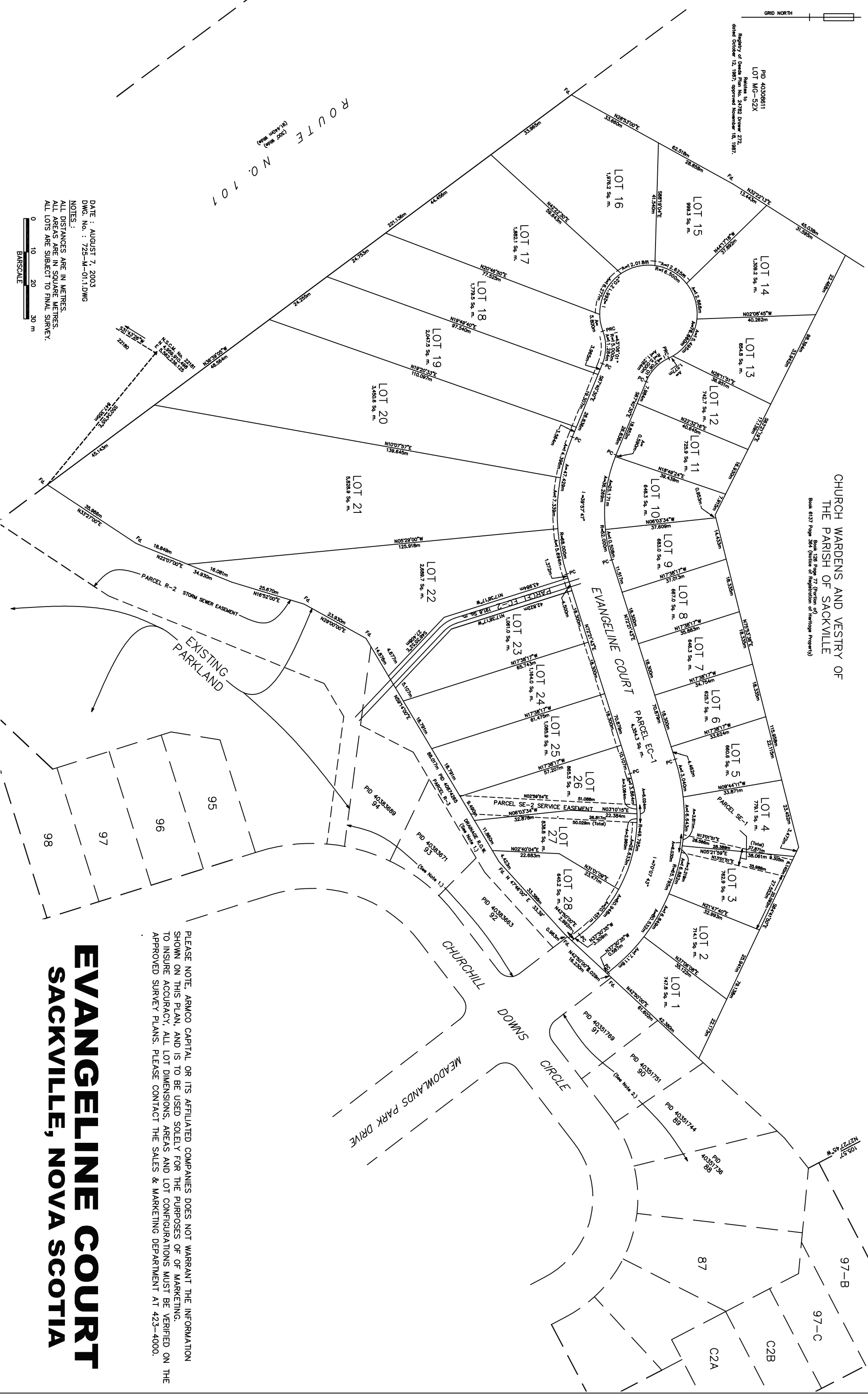


PID 40308611  
 LOT MG-52X  
 Reverts to  
 Registry of Deeds Plan No. 24782 Drove 272,  
 dated October 12, 1987, approved November 18, 1987.

CHURCH WARDENS AND VESTRY OF  
 THE PARISH OF SACKVILLE  
 Book 6137 Page 364 (Notice of Registration of Heritage Property)

ROUTE NO. 101  
 (2000 Mph)  
 (91.440m Mph)



DATE : AUGUST 7, 2003  
 DWG. No. : 725-M-01.1.DWG

NOTES:  
 ALL DISTANCES ARE IN METRES.  
 ALL AREAS ARE IN SQUARE METRES.  
 ALL LOTS ARE SUBJECT TO FINAL SURVEY.



PLEASE NOTE, ARMCO CAPITAL OR ITS AFFILIATED COMPANIES DOES NOT WARRANT THE INFORMATION SHOWN ON THIS PLAN, AND IS TO BE USED SOLELY FOR THE PURPOSES OF MARKETING. TO INSURE ACCURACY, ALL LOT DIMENSIONS, AREAS AND LOT CONFIGURATIONS MUST BE VERIFIED ON THE APPROVED SURVEY PLANS. PLEASE CONTACT THE SALES & MARKETING DEPARTMENT AT 423-4000.

**EVANGELINE COURT**  
**SACKVILLE, NOVA SCOTIA**