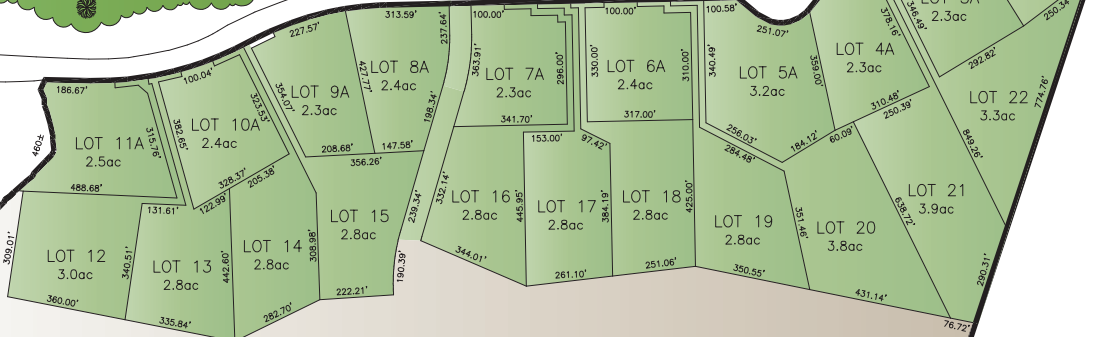


COLE HARBOUR HERITAGE PROVINCIAL PARK

BISSETT ROAD

← TO COLE HARBOUR

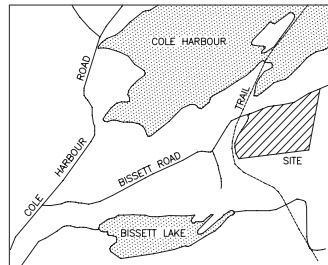
TRANS CANADA TRAIL (SALT MARSH TRAIL)



REMAINING LANDS

# BISSETT ROAD - PHASE 1

COLE HARBOUR, HALIFAX REGIONAL MUNICIPALITY



KEYPLAN

N.T.S.

DATE: APRIL 14, 2005  
DWG No. 300-M-02.1



PLEASE NOTE, KIMBERLY LLOYD DEVELOPMENTS OR ITS AFFILIATED COMPANIES DOES NOT WARRANT THE INFORMATION SHOWN ON THIS PLAN, AND IS TO BE USED SOLELY FOR THE PURPOSES OF MARKETING. TO INSURE ACCURACY, ALL LOT DIMENSIONS, AREAS AND LOT CONFIGURATIONS MUST BE VERIFIED ON THE APPROVED SURVEY PLANS. PLEASE CONTACT THE SALES & MARKETING DEPARTMENT AT 423-6000.