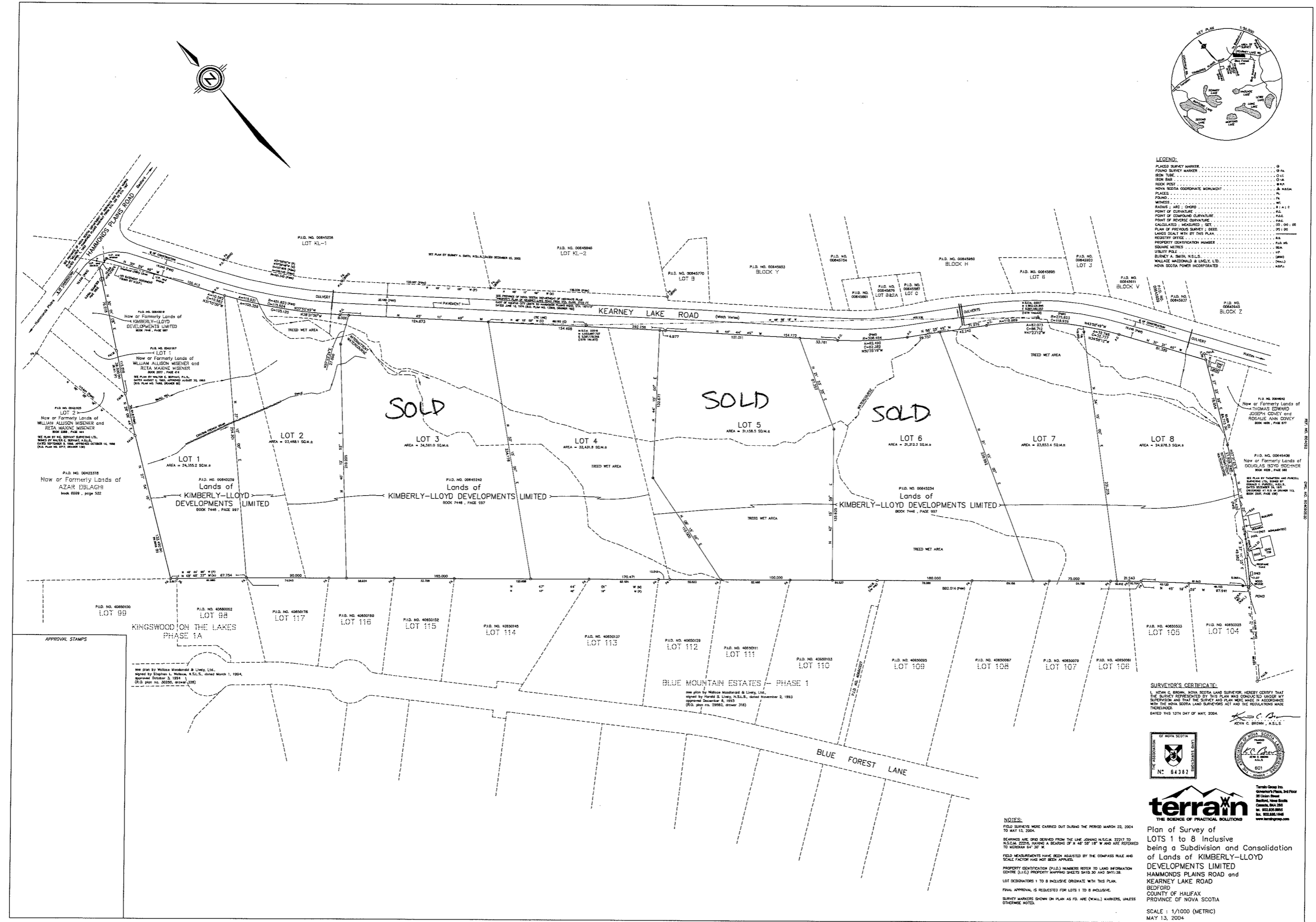


LEGEND:

PLACED SURVEY MARKER	SP
FOUND SURVEY MARKER	SP
IRON PIPE	SP
IRON ROD	SP
ROCK POST	SP
NOVA SCOTIA COORDINATE MONUMENT	SP
PLACES	PL
ROADS	R
WATERS	W
RADIUS - ARC, CHORD	R, C
POINT OF CURVATURE	P.C.
POINT OF BEGINNING CURVATURE	P.B.C.
POINT OF REVERSE CURVATURE	P.R.C.
CALCULATED / MEASURED / SET	C / M / S
PLAN OF PREVIOUS SURVEY, E. REG.	P.P.S. E. REG.
LANDS DEALT WITH BY THIS PLAN	L.D.W. BY THIS PLAN
REGISTERED OFFICE	REG. OFF.
PROPERTY IDENTIFICATION NUMBER	P.I.N.
SQUARE METRES	SQ. MET.
UTILITY POLE	U.P.
BURNBY & SMITH, N.S.L.S.	B. & S.
WALLACE MACDONALD & LINDY, LTD.	W. & L.
NOVA SCOTIA POWER INCORPORATED	N.S.P.I.



APPROVAL STAMPS

See plan by Wallace Macdonald & Lindy, Ltd., signed by Stephen L. Smith, N.S.L.S., dated March 1, 1994, approval October 3, 1994, (P.L.S. plan no. 30250, order 238)

BLUE MOUNTAIN ESTATES - PHASE 1

see plan by Wallace Macdonald & Lindy, Ltd., signed by Harold G. Lundy, N.S.L.S., dated November 2, 1993, approved December 8, 1993, (P.L.S. plan no. 29961, order 316)

SURVEYOR'S CERTIFICATE:

I, KEVIN C. BROWN, NOVA SCOTIA LAND SURVEYOR, HEREBY CERTIFY THAT THE SURVEY REPRESENTED BY THIS PLAN WAS CONDUCTED UNDER MY SUPERVISION AND THAT THE SURVEY AND PLAN WERE MADE IN ACCORDANCE WITH THE NOVA SCOTIA LAND SURVEYORS ACT AND THE REGULATIONS MADE THEREUNDER.

DATED THIS 13TH DAY OF MAY, 2004.

Kevin C. Brown, N.S.L.S.



terrain
THE SCIENCE OF PRACTICAL SOLUTIONS

Terrence O'Neil Inc.
Geomatics & Surveying
30 Lyster Road
Bedford, Nova Scotia
Canada, B6A 2S8
Tel: 902.233.8888
Fax: 902.233.1446
www.terraingroup.com

NOTES:

FIELD SURVEYS WERE CARRIED OUT DURING THE PERIOD MARCH 22, 2004 TO MAY 13, 2004.

BEARINGS ARE GRID DERIVED FROM THE LINE JOINING N.S.L.S.M. 22217 TO N.S.L.S.M. 22216, HAVING A BEARING OF $N 46^{\circ} 29' 18'' W$ AND ARE REFERRED TO MERIDIAN $64^{\circ} 30' W$.

FIELD MEASUREMENTS HAVE BEEN ADJUSTED BY THE COMPASS RULE AND SCALE FACTOR HAS NOT BEEN APPLIED.

PROPERTY IDENTIFICATION (P.I.) NUMBERS REFER TO LAND INFORMATION CENTRE (L.I.C.) PROPERTY MAPPING SHEETS SA10.30 AND SA11.30.

LOT DESIGNATIONS 1 TO 8 INCLUSIVE ORIGINATE WITH THIS PLAN.

FINAL APPROVAL IS REQUESTED FOR LOTS 1 TO 8 INCLUSIVE.

SURVEY MARKERS SHOWN ON PLAN AS FD. ARE (WALL) MARKERS, UNLESS OTHERWISE NOTED.

Plan of Survey of
LOTS 1 to 8 Inclusive
being a Subdivision and Consolidation
of Lands of KIMBERLY-LLOYD
DEVELOPMENTS LIMITED
HAMMONDS PLAINS ROAD and
KEARNEY LAKE ROAD
BEDFORD
COUNTY OF HALIFAX
PROVINCE OF NOVA SCOTIA

SCALE: 1/1000 (METRIC)
MAY 13, 2004